

A PLAT OF OSPREY CREEK

BEING PLAT NO. 9 OF MARTIN DOWNS, A P.U.D.
LYING IN SECTION 14, TWP. 38 S., RGE. 40 E.
MARTIN COUNTY, FLORIDA

JANUARY, 1984

I, Louise V. Isaacs,
Clerk of the Circuit
Court of Martin County,
Florida, hereby certify
that this Plat was filed
for record in Plat Book
9, Page 59, Martin
County, Florida, Public
Records, this _____
day of _____, 1984.

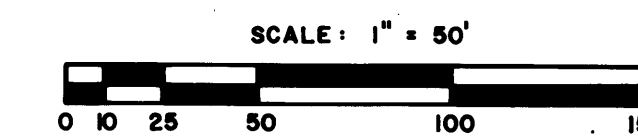
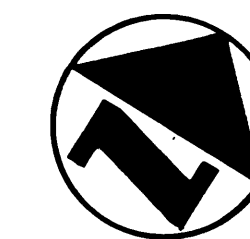
Louise V. Isaacs, Clerk
Circuit Court
Martin County, Florida

By: _____
Deputy Clerk

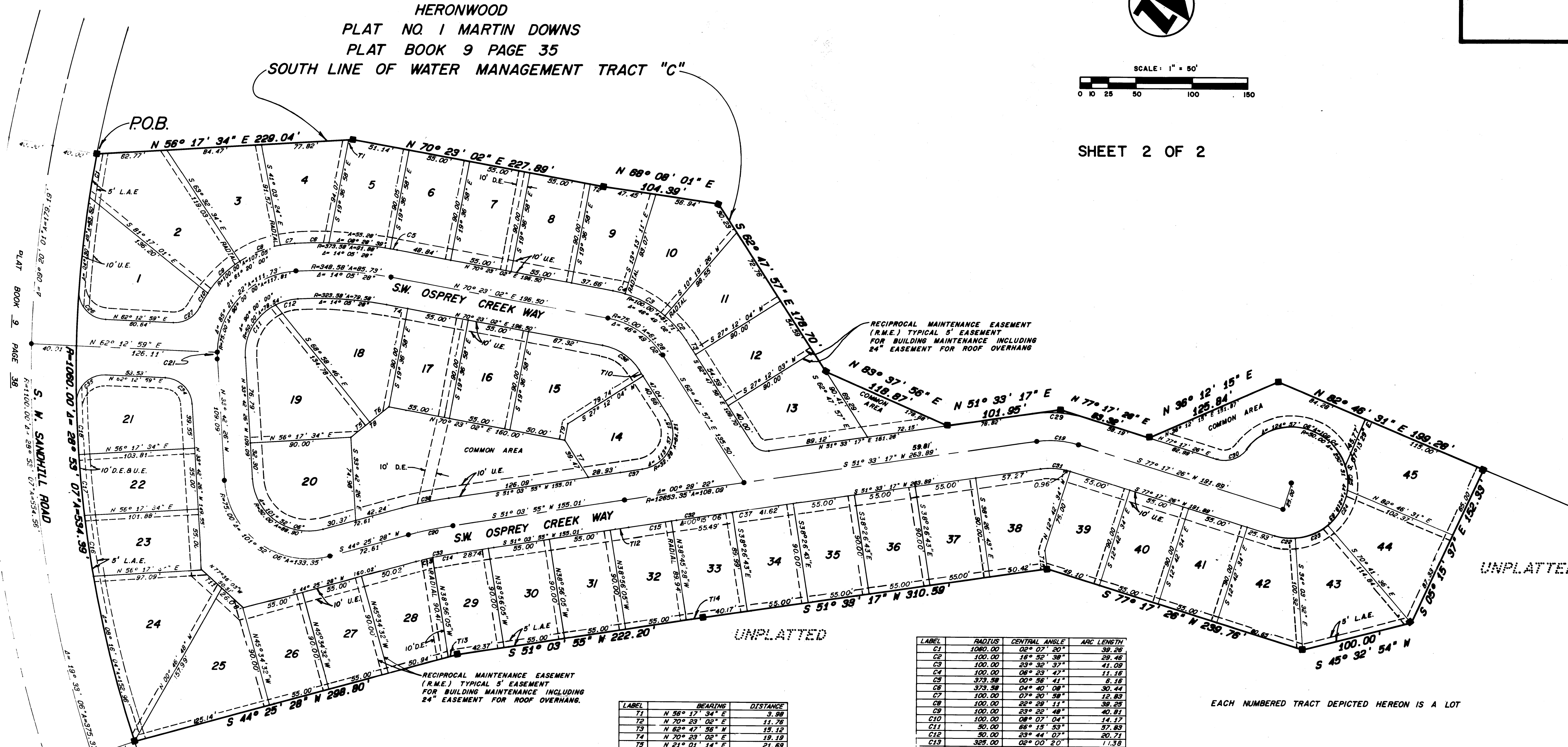
File No. _____

(Circuit Court Seal)

HERONWOOD
PLAT NO. 1 MARTIN DOWNS
PLAT BOOK 9 PAGE 35
SOUTH LINE OF WATER MANAGEMENT TRACT "C"



SHEET 2 OF 2



LABEL	BEARINGS	DISTANCE
71	N 56° 17' 34" E	3.98
72	N 70° 23' 02" E	11.78
73	N 62° 47' 56" E	15.12
74	N 70° 23' 02" E	12.13
75	N 21° 01' 14" E	21.69
76	S 21° 01' 14" N	21.77
77	S 62° 47' 56" E	38.47
78	N 21° 01' 14" E	43.46
79	S 18° 36' 58" E	15.00
710	N 62° 47' 56" E	6.38
711	S 77° 35' 03" E	24.43
712	N 51° 03' 55" E	16.27
713	S 44° 25' 28" N	12.71
714	S 51° 03' 55" N	14.83
715	N 34° 10' 27" W	16.12

LABEL	RADIUS	CENTRAL ANGLE	ARC LENGTH
C1	1080.00	02° 07' 20"	39.26
C2	100.00	18° 52' 38"	28.48
C3	100.00	23° 32' 37"	41.09
C4	100.00	08° 25' 47"	11.18
C5	373.38	00° 56' 41"	6.18
C6	373.38	04° 40' 08"	30.44
C7	100.00	07° 20' 58"	12.83
C8	100.00	02° 26' 11"	36.62
C9	100.00	23° 22' 48"	40.81
C10	100.00	08° 07' 04"	14.17
C11	50.00	68° 15' 53"	57.83
C12	50.00	23° 44' 07"	20.71
C13	325.00	02° 00' 20"	11.39
C14	325.00	04° 33' 07"	26.29
C15	12628.38	02° 10' 37"	330.00
C16	1080.00	02° 56' 04"	55.22
C17	1080.00	02° 58' 30"	55.04
C18	1080.00	02° 28' 59"	45.94
C19	65.00	25° 44' 08"	36.18
C20	350.00	06° 38' 27"	40.57
C21	78.00	04° 38' 38"	6.08
C22	50.00	21° 20' 58"	18.63
C23	50.00	36° 36' 03"	31.87
C24	50.00	42° 22' 22"	36.88
C25	50.00	28° 13' 13"	29.01
C26	25.00	81° 34' 48"	38.88
C27	25.00	67° 15' 28"	28.35
C28	15.00	68° 38' 47"	17.19
C29	110.00	28° 44' 08"	48.41
C30	25.00	70° 31' 44"	30.73
C31	80.00	28° 44' 08"	26.55
C32	12628.38	00° 29' 22"	107.88
C33	325.00	02° 36' 27"	37.87
C34	65.00	84° 04' 58"	36.89
C35	28.00	83° 57' 38"	41.00
C36	30.00	48° 48' 08"	40.88
C37	18878.38	00° 03' 33"	13.38
C38	375.00	06° 38' 27"	45.48

BEARING BASE: THE REAR LOT LINES OF LOTS 2, 3, AND 4 IS TAKEN AS BEING N 56°17'34" E. AND ALL OTHER BEARINGS ARE RELATIVE THERETO.

EACH NUMBERED TRACT DEPICTED HEREON IS A LOT

P.R.M. (PERMANENT REFERENCE MONUMENT) = ■
P.C.P. (PERMANENT CONTROL POINT) = ●
U.E. = UTILITY EASEMENT
D.E. = DRAINAGE EASEMENT
R.M.E. = RECIPROCAL MAINTENANCE EASEMENT
L.A.E. = LIMITED ACCESS EASEMENT

LINDAHL, BROWNING, FERRARI & HELLSTROM, INC.
Consulting Engineers, Planners & Surveyors
JUPITER, FLORIDA STUART, FLORIDA
FORT PIERCE, FLORIDA